

Infra Guard

Rack Sensor System



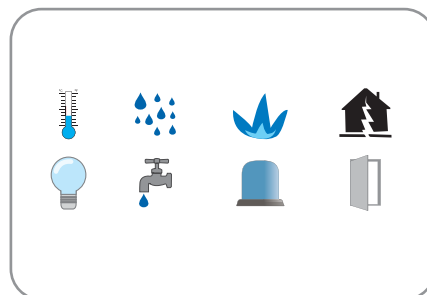
For mission critical data centers, the ability to remotely manage the IT rack environment is vital. Environmental issues to your racks, including high temperature & humidity, smoke, water leakage, physical threats, unauthorized door access, power and cooling inefficiencies can have a significant impact on the performance of the operations.

InfraGuard provides an environmental monitoring solution to secure high levels of data center operational stability and flexibility. It also gives a free integrated platform for today's data centers. User can remotely manage the environment and conditions in racks via IP. This can help reducing manpower and travel costs by negating the need for staff to actually be at the rack location.

Key Benefits

>>> Variety of Sensors / Peripherals

Getting instant notification of various environmental fluctuations, InfraGuard offers a variety of environmental sensors.



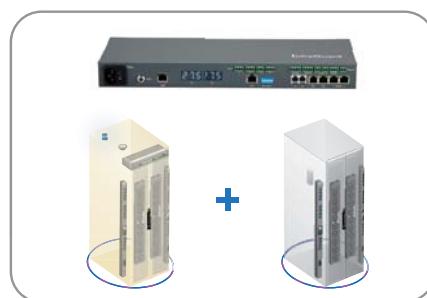
>>> Integrated PDUs / Fan Units

In order to enhance the functionality, the InfraGuard remote management supports the integration to intelligent Switched / Monitored PDUs and Fan Units. Up to 1920 x kWh PDU and same quantity of Fan Units can be remotely managed by the management software.



>>> Scalable Flexibility

Multi ports for some critical sensors / peripherals / devices on control box are available. Users can apply "One Box One Rack" in order to achieve the optimum environmental management, or "One Box Two Racks" for cost efficient setup.



>>> High Density of Environmental Management

The free management software IGM-03 supports up to 30 x IP.

Up to 16 x InfraGuard control box can be connected by daisy chain and remotely access by one single IP.

Under "One Box Two Racks" scenario, environmental remote management up to 960 racks can be achieved.



Control box consolidates the integrated sensors and devices.

Up to 16 x Control box can be connected by daisy chain for IP remote access.

InfraGuard offers two control box models with same integrated sensor and device I/O.



EC Box 300M - Master control box (1st Level)



EC Box 300 - Slave control box (2nd - 16th Level)

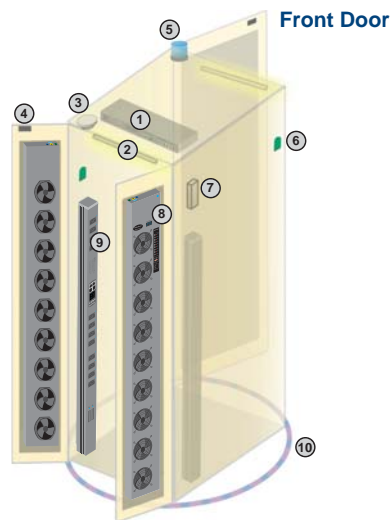


	EC-300M (Master Box)	EC-300 (Slave Box)
Daisy Chain	1st Level	2nd - 16th Level via Master Box
SNMP	✓	
LAN Port	✓	✗
Daisy Chain Port - LINK	✗	✓
Daisy Chain Port - OUT	✓	✓
Dual Power Input Option	✓	✓
Temperature LED	✓	✓
Temp-Humid Sensor	2	2
Smoke / Shock Sensor	2	2
Water Sensor	2	2
Door Sensor	4	4
LED Light Bar	2	2
LED Flashing Beacon	1	1
Alarm Board	1	1
Integrated PDU	4 (daisy chain)	4 (daisy chain)
Integrated Fan Unit	4 (daisy chain)	4 (daisy chain)
Product Dimension (W x D x H)	400 x 135 x 39.7 mm / 15.7 x 5.3 x 1.6 inch	
Packing Dimension (W x D x H)	557 x 367 x 98 mm / 21.9 x 14.4 x 3.9 inch	
Net Weight	1.06 kgs / 2.3 lbs	
Gross Weight	2.2 kgs / 4.8 lbs	
Power Consumption	Auto-sensing 100 to 240VAC, 50 / 60Hz, Max. 48 Watt	
Operating Temperature	0 to 55°C Degree	
Storage Temperature	-5 to 60°C Degree	
Relative Humidity	5~90%, non-condensing	
Mounting	1U Rackmount	
Safety Regulatory	FCC & CE certified	
Environmental	RoHS2 & Reach compliant	

In One Box - One Rack connection, complete range of integrated sensors and devices can be applied to the rack. Multiple sensors / integrated devices can be applied to one single rack in order to achieve the optimum environmental monitoring conditions.



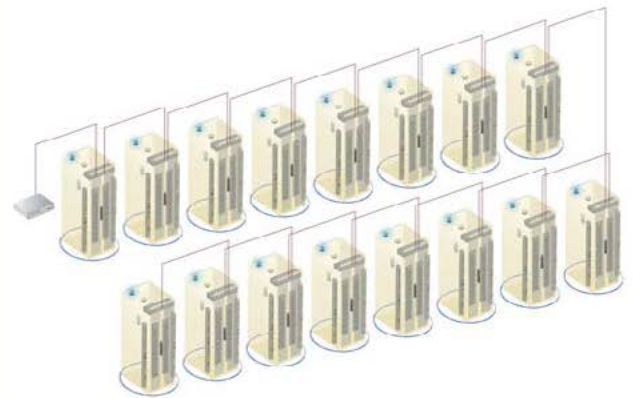
Suggested Sensors / Devices Allocation



Item	Rack
① EC Box	1
② LED Light Bar	2
③ Smoke Sensor	1
④ Door Sensor	2
⑤ Flashing LED Beacon	1
⑥ Temp. & Humid. Sensor	2
⑦ Shock Sensor	1
⑧ Fan Unit	2
⑨ PDU	2
⑩ Water Sensor	1

Rack Level Connection

- EC 300M as the 1st level master EC box
- The EC box can be cascaded up to 16 levels
- Only 1 x IP for 16 x EC box remote access



- Daisy chain by Cat5/6 cable
- Max. distance between 2 EC box is 20M
- Max. distance in a daisy chain group up to 300M

IGM-03 supports 30 x IP address ;
480 x EC box ;
1920 x Integrated kWh PDU ;
1920 x Integrated Cooling Fan Unit ;
Thousands of Environmental Sensors

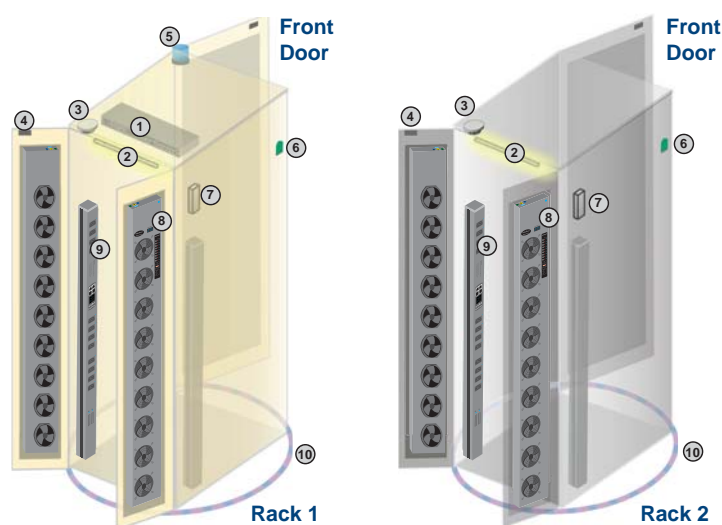
Remote access by
web-based GUI
from anywhere
around the world

5 x concurrent user for remote management

EC Box provides multi-ports for some critical sensors / devices. It means that enables user to share the control box and some duplicated sensors / devices to two racks. A cost efficient environmental management can be achieved.



Suggested Sensors / Devices Allocation

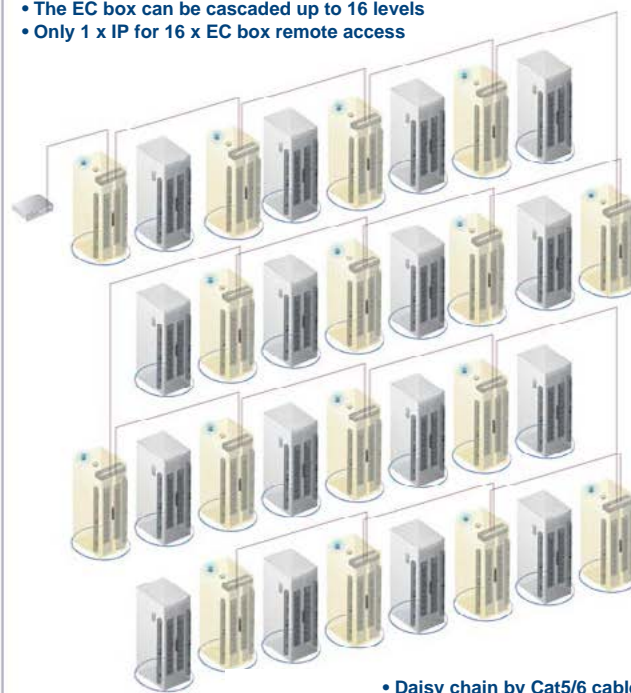


Item	Rack 1	Rack 2
① EC Box	1	-
② LED Light Bar	1	1
③ Smoke Sensor	1 *	1 *
④ Door Sensor	2	2
⑤ Flashing LED Beacon	1	-
⑥ Temp. & Humid. Sensor	1	1
⑦ Shock Sensor	1 *	1 *
⑧ Fan Unit	2	2
⑨ PDU	2	2
⑩ Water Sensor	1	1

* either smoke sensor or shock sensor

Rack Level Connection

- EC 300M as the 1st level master EC box
- The EC box can be cascaded up to 16 levels
- Only 1 x IP for 16 x EC box remote access



- Daisy chain by Cat5/6 cable
- Max. distance between 2 EC box is 20M
- Max. distance in a daisy chain group up to 300M

IGM-03 supports 30 x IP address ;
480 x EC box ;
1920 x Integrated kWh PDU ;
1920 x Integrated Cooling Fan Unit ;
Thousands of Environmental Sensors

Remote access by
web-based GUI
from anywhere
around the world

5 x concurrent user for remote management

To maintain an optimum operation conditions in data center, getting instant notification of various environmental fluctuations is vital.

InfraGuard offers a wide range of sensors for a complete environmental monitoring, including temperature, humidity, smoke, shock, water leakage and rack access.

Peripherals such as LED light bar and flashing LED beacon, are designed for use with the sensors in order to allow a local environmental monitoring.



Temp. + Humid. Sensor



- One sensor for temperature & humidity
- Low profile and light weight design with a magnetic base for easy affixing to rack

Part no. :

IG-TH01-2M with 2M cord

IG-TH01-4M with 4M cord

Temp. Sensor



- Detection for temperature
- Low profile and light weight design with a magnetic base for easy affixing to rack

Part no. :

IG-T01-2M with 2M cord

IG-T01-4M with 4M cord

Water Sensor



- Fluid leakage detection
- 5M rope round the rack bottom to detect any fluid flowing to the rack area
- IP65 cable joint connectors provided

Part no. :

IG-W01-3M with 3M cord

Smoke Sensor



- Safely operated smoke detection

Part no. :

IG-S01-1M with 1M cord

IG-S01-3M with 3M cord

Shock Sensor



- Alert the physical vibration on the rack

Part no. :

IG-V01-1M with 1M cord

IG-V01-3M with 3M cord

LED Beacon



- Highly visible for alerting user to alarm status

Part no. :

IG-FB03-1M with 1M cord

IG-FB03-3M with 3M cord

Inductive Door Sensor



- Light weight, mini size & adhesive
- No custom cutting required on doors
- Easy for existing rack retrofit or integration to new rack

Part no. :

IG-DSI-2M with 2M cord

IG-DSI-4M with 4M cord

Mechanical Door Sensor



- Low cost
- Precise
- Cost efficient integration to new rack
- Custom cutting required on door

Part no. :

IG-DSW-2M with 2M cord

IG-DSW-4M with 4M cord

LED Light Bar



- Auto ON / OFF by door sensor detection
- Manual ON / OFF by software remote
- Magnetic base for easy affixing to rack
- Dimension (W x D x H) : 20 x 300 x 12 mm

Part no. :

CLB-IX-002 with 2M cord

CLB-IX-003 with 3M cord

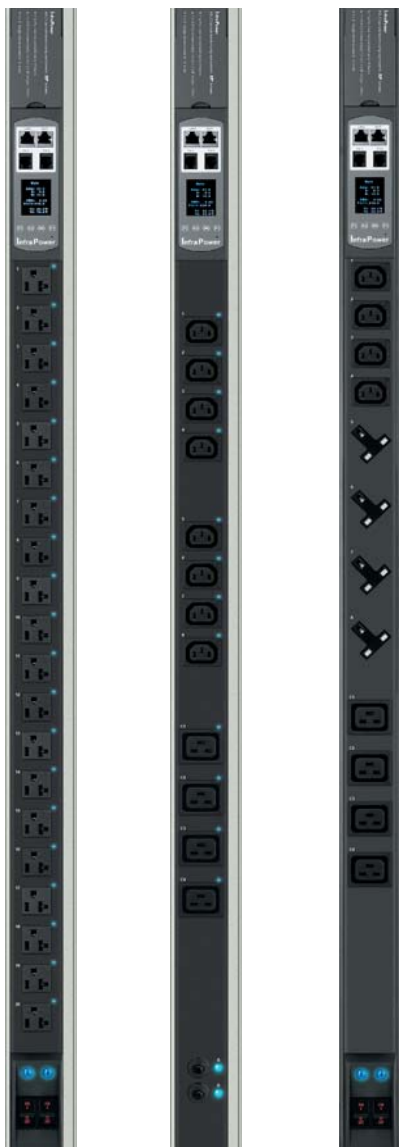
With today's increasing demand for power management solution, a complete suite of rack PDU models is required specifically to help data center IT managers meet their rapidly escalating power requirements.

InfraPower® intelligent PDU provides a power management solution from PDU Level to Outlet Level kWh monitoring. Switched models are also available for remote outlet switching on / off. Our PDUs are also offered in many sizes and configurations depending on voltage, current, outlet number and type of connections.



cUL certified for specific configurations

Details



InfraPower®

PDU series for InfraGuard

Outlet Measurement

Outlet Switch ON / OFF

kWh Measurement

Daisy-Chained PDU x 4 via EC Box

Sensor Port x 2 (Temp. + Humid)

Hot-Swap Meter

1.8" Color LCD Display

SNMP Hardware

Management Software

Aggregate Amp Measurement

Local Ammeter

Hydraulic Type MCB Support

Individually Fused Support

Operating Temperature Range -5°C to 60°C

Vertical & Rackmount PDU

Multiple Outlet Configuration

Tool-less Mounting

Voltage : 110V / 208V / 230V

Fuse / Circuit Breaker (MCB) Option

Surge Protector Option

EMI Filter Option

	WSi Switched	WS Switched	W Monitored
Outlet Measurement	✓		
Outlet Switch ON / OFF	✓	✓	
kWh Measurement	✓	✓	✓
Daisy-Chained PDU x 4 via EC Box	✓	✓	✓
Sensor Port x 2 (Temp. + Humid)	✓	✓	✓
Hot-Swap Meter	✓	✓	✓
1.8" Color LCD Display	✓	✓	✓
SNMP Hardware	✓	✓	✓
Management Software	✓	✓	✓
Aggregate Amp Measurement	✓	✓	✓
Local Ammeter	✓	✓	✓
Hydraulic Type MCB Support	✓	✓	✓
Individually Fused Support	✓	✓	✓
Operating Temperature Range -5°C to 60°C	✓	✓	✓
Vertical & Rackmount PDU	✓	✓	✓
Multiple Outlet Configuration	✓	✓	✓
Tool-less Mounting	✓	✓	✓
Voltage : 110V / 208V / 230V	✓	✓	✓
Fuse / Circuit Breaker (MCB) Option	✓	✓	✓
Surge Protector Option	✓	✓	✓
EMI Filter Option	✓	✓	✓

Rackmount PDU



Field-Replaceable Meter



Sensor Port x 2 (Temp. + Humid.)



The biggest challenge in today's data center is thermal management. Cooling the equipment in an enclosed rack has always been important.

InfraCool intelligent fan units are designed to have both local & remote management capabilities. Front panel LED and buttons allow the local monitoring and individual fan kit switch on / off. Moreover, fan speed can be adjusted automatically according to the temperature detected by the sensor. It provides adequate airflow and minimizes the operation cost for data center energy consumption.


[Details](#)


InfraCool	Door Mount Fan Panel		1U Rackmount Fan Tray		
Height	33U		1U		
Fan Number	6	9	3	6	9
Total CFM	648	972	324	648	972
Airflow					
Temp. Port	✓		✓		
Temp. Sensor	✓		✓		
Control Panel :	✓		✓		
• Individual Fan On / Off	✓		✓		
• Alarm Temp. Setting	✓		✓		
• Unit CFM (fan speed) Setting	✓		✓		
• Temperature LED	✓		✓		
• Fan Status LED	✓		✓		
• CFM Status LED	✓		✓		

Rackmount Fan Trays



Auto Fan Speed Control



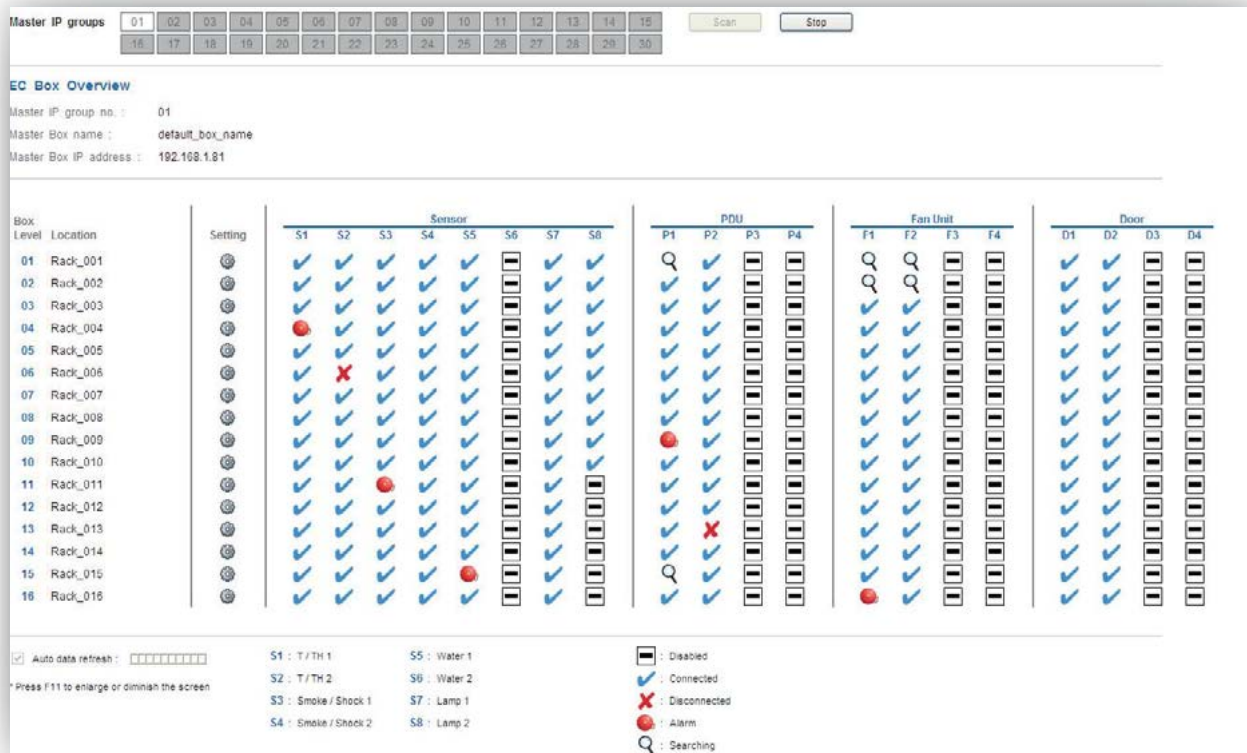
Temp. Sensor Port x 1



InfraGuard Manager IGM-03 is a FREE environmental sensor management software to monitor up to 30 Master IP Groups remotely (max. 16 EC box levels in each Master IP Group), total 480 EC boxes. Each EC box can connect a variety of sensors to provide an environmental monitoring solution to secure high levels of data center operational stability and flexibility.

To enhance the functionality, up to 1920 x kWh PDU / Remote Fan Unit can be monitored through **IGM-03** GUI as well. 5 concurrent user access are bundled for achieving the demand of multi-user / multi-tasking in nowadays' time-sharing data center operation.

[Details](#)



Features	IGM-03
Capacity	
Master IP Group (just 1 for 16 EC box levels)	30
EC Box Number	480
Concurrent User	5
Device Overview	
Status of Sensor, PDU, Fan Unit & Door	✓
Device Setting / Audio and Visual Output Setting	✓
Sensor Peripheral	
Status Monitoring	✓
Location of Sensor / Peripheral	✓
Temp-Humid Alarm Setting / Rising Alert Threshold Setting	✓
PDU	
Energy Consumption kWh / Amp Monitoring	✓
Outlet Level Measurement	✓
PDU Outlet Schedule	✓
Outlet Switch ON / OFF	✓
Amp Alarm Threshold Setting	✓
Amp Rising / Low Alert Threshold Setting	✓
Temp-Humid / Circuit Breaker Monitoring	✓
Fan Unit	
CFM & Temp. Monitoring	✓
Unit CFM (fan speed) Setting	✓
Auto CFM Control Setting	✓
Individual Fan Kit ON / OFF	✓
Fan Unit ON / OFF	✓
Event Log / Report	
System & Device Event	✓
Device Log / Reporting	✓

Sensors

- >> Sensor Status
- >> Sensor Setting
- >> Door Status
- >> Door Setting

Sensor Status

Rack ID group 00101

Page 1/2

Box Level	Location	Setting	Temp. Humid		Smoke / Shock Status		Water Status		Lamp Status	
			Location	Temp. Humid	Location	Status	Location	Status	Location	Status
01 Rack_001	01 Front bottom	24.9 55	03 Rear inside top	Connected	03 Bottom surrounded	Connected	07 Front top	OFF		
	02 Rear top	23.1 60	04 Upper inside	Connected	04 -	-	08 Rear top	OFF		
	03 Front bottom	24.0 57	05 Rear inside top	Connected	05 Bottom surrounded	Connected	07 Front top	OFF		
02 Rack_002	02 Rear top	20.0 65	06 Upper inside	Connected	06 -	-	08 Rear top	OFF		
	03 Front bottom	24.1 49	07 Rear inside top	Connected	07 Bottom surrounded	Connected	07 Front top	ON		
	02 Rear top	23.5 58	08 Upper inside	Connected	08 -	-	08 Rear top	OFF		
03 Rack_003	03 Front bottom	26.0 50	09 Rear inside top	Connected	09 Bottom surrounded	Connected	07 Front top	OFF		
	02 Rear top	23.1 63	10 Upper inside	Connected	10 -	-	08 Rear top	OFF		
	01 Front bottom	23.8 59	11 Rear inside top	Connected	11 Bottom surrounded	Connected	07 Front top	OFF		
04 Rack_004	04 Rear top	21.0 69	12 Upper inside	Connected	12 -	-	08 Rear top	ON		
	03 Front bottom	23.8 58	13 Rear inside top	Connected	13 Bottom surrounded	Connected	07 Front top	OFF		
	02 Rear top	23.1 61	14 Upper inside	Connected	14 -	-	08 Rear top	OFF		
05 Rack_005	05 Front bottom	23.1 60	15 Rear inside top	Connected	15 Bottom surrounded	Connected	07 Front top	OFF		
	02 Rear top	22.9 61	16 Upper inside	Connected	16 -	-	08 Rear top	ON		
	01 Front bottom	23.9 57	17 Rear inside top	Connected	17 Bottom surrounded	Connected	07 Front top	OFF		
06 Rack_006	06 Rear top	23.2 61	18 Upper inside	Connected	18 -	-	08 Rear top	ON		
	03 Front bottom	23.2 61	19 Rear inside top	Connected	19 Bottom surrounded	Connected	07 Front top	OFF		
	02 Rear top	23.2 61	20 Upper inside	Connected	20 -	-	08 Rear top	OFF		

Auto data refresh: 00:00:00

* Press F11 to enlarge or diminish the screen

PDU

- >> Status
- >> PDU / Temp + Humid Setting
- >> Outlet Schedule
- >> PDU Log
- >> Outlet kWh Log
- >> Outlet Switch ON / OFF

PDU Setting
Box level: 01
Status: Connected
Name: Rack_001
Location: Rack_001

PDU: 01 02 03 04 05 06 07 08 09 10 11 12 13 14 15 16 17 18 19 20 21 22 23 24 25 26 27 28 29 30 31 32 33 34 35 36 37 38 39 40 41 42 43 44 45 46 47 48 49 50 51 52 53 54 55 56 57 58 59 60 61 62 63 64 65 66 67 68 69 70 71 72 73 74 75 76 77 78 79 80 81 82 83 84 85 86 87 88 89 90 91 92 93 94 95 96 97 98 99 100

PDU kWh: 0.00
PDU load amp: 0.0
Power factor: 0.07
Aqueous power (WVA): 0.00

Temp: 22.8 °C / 73.0 °F
Humid: 62.9 %

Temp: 22.8 °C / 73.0 °F
Humid: 62.9 %

Peak amp: 0.0
Peak kWh: 0.00
2013/03/15 00:00:00

Reset

Outlet Name Amp Load / Alarm / IL alert / L alert Vrms Status Switch

01	outlet_name_01	0.0 / 10.0 / 0.0 / 0.0	0.00	ON	OFF
02	outlet_name_02	0.0 / 10.0 / 0.0 / 0.0	0.00	OFF	ON
03	outlet_name_03	0.0 / 10.0 / 0.0 / 0.0	0.00	OFF	ON
04	outlet_name_04	0.0 / 10.0 / 0.0 / 0.0	0.00	OFF	ON
05	outlet_name_05	0.0 / 10.0 / 0.0 / 0.0	0.00	OFF	ON
06	outlet_name_06	0.0 / 10.0 / 0.0 / 0.0	0.00	OFF	ON
07	outlet_name_07	0.0 / 10.0 / 0.0 / 0.0	0.00	OFF	ON
08	outlet_name_08	0.0 / 10.0 / 0.0 / 0.0	0.00	OFF	ON
09	outlet_name_09	0.0 / 10.0 / 0.0 / 0.0	0.00	OFF	ON
10	outlet_name_10	0.0 / 10.0 / 0.0 / 0.0	0.00	OFF	ON
11	outlet_name_11	0.0 / 10.0 / 0.0 / 0.0	0.00	OFF	ON
12	outlet_name_12	0.0 / 10.0 / 0.0 / 0.0	0.00	OFF	ON
13	outlet_name_13	0.0 / 10.0 / 0.0 / 0.0	0.00	OFF	ON
14	outlet_name_14	0.0 / 10.0 / 0.0 / 0.0	0.00	OFF	ON
15	outlet_name_15	0.0 / 10.0 / 0.0 / 0.0	0.00	OFF	ON
16	outlet_name_16	0.0 / 10.0 / 0.0 / 0.0	0.00	OFF	ON
17	outlet_name_17	0.0 / 10.0 / 0.0 / 0.0	0.00	OFF	ON
18	outlet_name_18	0.0 / 10.0 / 0.0 / 0.0	0.00	OFF	ON
19	outlet_name_19	0.0 / 10.0 / 0.0 / 0.0	0.00	OFF	ON
20	outlet_name_20	0.0 / 10.0 / 0.0 / 0.0	0.00	OFF	ON
21	outlet_name_21	0.0 / 10.0 / 0.0 / 0.0	0.00	OFF	ON
22	outlet_name_22	0.0 / 10.0 / 0.0 / 0.0	0.00	OFF	ON
23	outlet_name_23	0.0 / 10.0 / 0.0 / 0.0	0.00	OFF	ON
24	outlet_name_24	0.0 / 10.0 / 0.0 / 0.0	0.00	OFF	ON

Auto data refresh: 00:00:00

Apply Save new data
Cancel Cancel new data input
Exit Return to PDU STATUS

* Press F11 to enlarge or diminish the screen

Fan

- >> Status
- >> Fan Unit Setting
- >> Temp. Setting

Fan Unit Setting
Box level: 02
Status: Connected
Name: Rack_002
Location: Rack_002

Fan unit: 01 02 03 04 05 06 07 08 09 10 11 12 13 14 15 16 17 18 19 20 21 22 23 24 25 26 27 28 29 30 31 32 33 34 35 36 37 38 39 40 41 42 43 44 45 46 47 48 49 50 51 52 53 54 55 56 57 58 59 60 61 62 63 64 65 66 67 68 69 70 71 72 73 74 75 76 77 78 79 80 81 82 83 84 85 86 87 88 89 90 91 92 93 94 95 96 97 98 99 100

Status: Connected
Name: FanName03
Location: FanLocation03

Unit switch: ON OFF
Unit CFM: Normal High Max

Temp. Sensor (°C)
Temp: -

Fan Status Switch

01	OFF	ON
02	OFF	ON
03	OFF	ON

Front

Auto data refresh: 00:00:00

Apply Save new data
Cancel Cancel new data input
Exit Return to FAN STATUS

* Press F11 to enlarge or diminish the screen

Control Box

EC-300M	Master control box - LAN port x 1 for remote over IP - Built-in SNMP - Daisy chain : 1st level
EC-300	Slave control box - Daisy chain : 2nd - 16th level
ECP-4A	Dual power input option, 4A@12V

Management Software

IGM-03	InfraGuard management software - Max. 30 master IP groups (just 1 for 16 EC box levels) - Max. 480 EC boxes - Max. 5 concurrent users - Package including CD key * Free of charge
---------------	--

Sensor / Peripheral

IG-TH01-2M	Temp. + Humid. sensor	w/ 2m cord
IG-TH01-4M	Temp. + Humid. sensor	w/ 4m cord
IG-T01-2M	Temp. sensor	w/ 2m cord
IG-T01-4M	Temp. sensor	w/ 4m cord
IG-S01-1M	Smoke sensor	w/ 1m cord
IG-S01-3M	Smoke sensor	w/ 3m cord
IG-V01-1M	Shock sensor	w/ 1m cord
IG-V01-3M	Shock sensor	w/ 3m cord
IG-W01-3M	Water sensor	w/ 3m Cat6 cable
IG-DSI-2M	Inductive door sensor, pair	w/ 2m cord
IG-DSI-4M	Inductive door sensor, pair	w/ 4m cord
IG-DSW-2M	Mechanical door sensor, pair	w/ 2m cord
IG-DSW-4M	Mechanical door sensor, pair	w/ 4m cord
CLB-IX-002	LED light bar	w/ 2m cord
CLB-IX-003	LED light bar	w/ 3m cord
IG-FB03-1M	LED beacon	w/ 1m cord
IG-FB03-3M	LED beacon	w/ 3m cord

PDU

InfraPower Intelligent PDU :

WSi	kWh switched PDU, outlet measurement
WS	kWh switched PDU
W	kWh monitored PDU

* All PDUs above come with Temp. + Humid. sensor port x 2

Outlet :	Voltage :
US Nema	100-120VAC
IEC C13 / C19	200-250VAC / 208VAC
UK BS1363 + IEC	200-250VAC
GR Schuko + IEC	200-250VAC
FR French + IEC	200-250VAC

For details, please refer to
<http://www.austin-hughes.com/infraguard/pdu-and-fan/pdu>

Fan Unit

InfraCool Remote Fan Unit :

RF-33.6	33U remote door mount fan panel w/ 6 fans
RF-33.9	33U remote door mount fan panel w/ 9 fans
RF-1.3	1U rackmount remote fan tray w/ 3 fans
RF-1.6	1U rackmount remote fan tray w/ 6 fans
RF-1.9	1U rackmount remote fan tray w/ 9 fans

* All remote fan units above come with Temp. sensor x 1

For details, please refer to
<http://www.austin-hughes.com/infraguard/pdu-and-fan/fan>

Founded in 1995, **Austin Hughes Electronics Ltd** is a design and manufacturing group that offers a broad range of solutions based around 19 inch rack mount technology. These solutions include InfraSolution remote access control and locking, InfraPower intelligent remote management power solutions, CyberView LCD Keyboard and KVM drawers & InfraCool intelligent remote cooling system.

Austin Hughes has ISO14001 and ISO9001 approved design, manufacturing, assembly and test facilities in Hong Kong and China. Austin Hughes supports a worldwide customer base, through its global locations in the Americas, EMEA and APAC and through its extensive authorized channel partner support network.

APAC

Austin Hughes Electronics Ltd.

Unit 3608-12, Cable TV Tower
9 Hoi Shing Road, Tsuen Wan
Hong Kong

Email: inquiry@austin-hughes.com

China

Austin Hughes Electronics (China) Ltd.

Hexi Road No.2, Jinxia Industrial Area
Changan Town, Dongguan City
Guangdong Province 523850
China

Americas

Austin Hughes Solutions Inc.

41320 Boyce Road, Fremont
CA 94538
USA

Email: inquiry@austin-hughes.com

EMEA

Austin Hughes Europe Ltd.

Unit 1, Chancery Gate Business Centre
Manor House Avenue
Southampton, SO15 0AE
United Kingdom

Email: info@austin-hughes.eu



Austin Hughes has an extensive distribution network,
including the Americas, EMEA and APAC.
Contact your nearest sales office for details of local representation

www.austin-hughes.com

Please ask for details of other products from Austin Hughes. Every effort has been made to ensure that the information contained herein is correct. There is a possibility that the image(s) shown may not be exactly the same as the final product. The company reserves the right to modify product specifications without prior notice and assumes no responsibility for any error which may appear in this publication.

All brand names, logo and registered trademarks are properties of their respective owners.

Copyright 2016 Austin Hughes Electronics Ltd. All rights reserved.

Distributed by:

Distributor by country on application

CA-IG-Q116V1