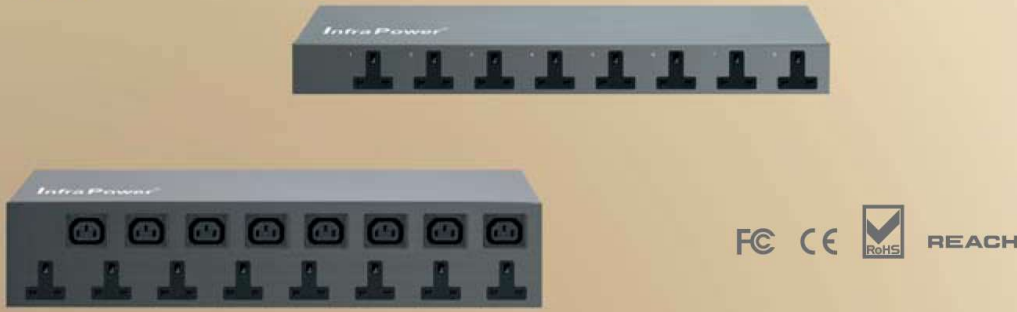


Basic PDU 230V



InfraPower Basic PDU is designed for cost efficient and reliable power distribution in data center. Customer can meet end to end equipment and management requirements using InfraPower whilst meeting budget and application demands.



>>> Wide Range / Custom Configuration



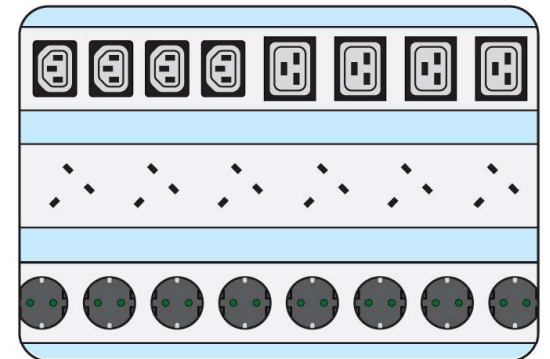
InfraPower offers a wide range of PDU configurations with vertical or horizontal rack mount form factors. Custom PDU configurations are available upon request.

>>> Surge Protector / EMI Filter



Surge protector grounds unwanted voltages above safe threshold. EMI filter suppresses conducted interference on a signal / power line.

>>> Multiple Outlet Configuration



IEC and UK / Schuko / FR outlets can be configured in a single PDU in order to increase the compatibility to different power cords of the rack mount equipment.

>>> Colored PDU Casings & Cords



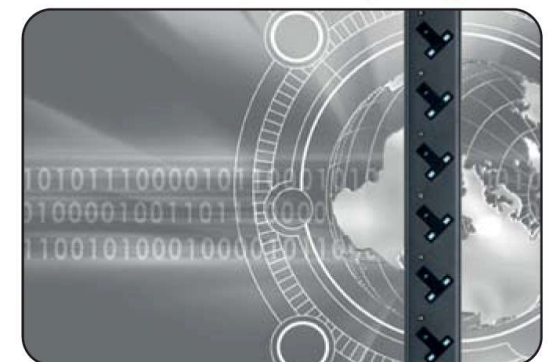
Pair of PDUs for two different power sources become a basic requirement in rack. Users can distinguish the PDU from which power source via colors.

>>> Circuit Protection



Safety operation is essential for your data center and server room. InfraPower 1-Phase PDU offers Resettable Fuse or Hydraulic MCB to protect the PDU circuit from current overload.

>>> Short Length Casing Design



Space-saving design of Basic allows a shorter PDU casing length. Max. 24 UK / Schuko outlets can be provided by a single vertical PDU installed in a typical 42U rack.

Vertical 1 inch = 25.4 mm

UK - 10A / 13A / 16A / 20A / 32A
UK + IEC - 16A / 20A / 32A

			Length
UK	C13	C19	mm
24			1650
20			1425
16			1200
12			900
8			650
4	20	6	1650
4	20	4	1425
4	16	4	1425
4	12	4	1200
4	8	4	1200

Schuko - 16A / 20A / 32A SCH + IEC - 16A / 20A / 32A

			Length
SCH	C13	C19	mm
24			1425
20			1200
16			1200
12			900
8			650
4	20	6	1650
4	20	4	1425
4	16	4	1200
4	12	4	1200
4	8	4	900

Horizontal

UK - 10A / 13A / 16A / 20A / 32A
UK + IEC - 16A / 20A / 32A

			Height
UK	C13	C19	U
8			1.25U
7			1.25U
6			1.25U
8	8	4	2U
8	8	2	2U
8	6	4	2U

Schuko - 16A / 20A / 32A SCH + IEC - 16A / 20A / 32A

			Height
SCH	C13	C19	U
8			1.25U
7			1.25U
6			1.25U
8	8	4	2U
8	8	2	2U
8	6	4	2U

- * All are aluminum chassis
- * 230V PDU bundled with Resettable Fuse
Optional upgrade to MCB is available



10A Inlet

 IEC320 C14

16A Inlet

 IEC320 C20

20A Inlet

 IEC 60309 2P+E

32A / 63A Inlet

 Open end

32A / 63A Inlet

 IEC 60309 2P+E

Basic PDU Product Code

Austin Hughes has designed a simple but informative InfraPower product code builder in order to let our clients determine the desired PDU configuration to meet their needs.

Code Structure

█ █ UK █ █ █ / █ █ █ █

█ █ SCH- █ █ █ / █ █ █ █

V █ UK █ / █ C13 / █ C19 █ █ █ / █ █ █ █

V █ SCH / █ C13 / █ C19 █ █ █ / █ █ █ █

Digit	Indication	Examples
█	Form Factor	V = Vertical H = Horizontal
█	Outlet nos	UK : 24 / 20 / 16 / 12 / 8 / 7 / 6 UK + IEC : 4 SCH : 24 / 20 / 16 / 12 / 8 / 7 / 6 SCH + IEC : 4
█	° degree (only for UK PDU)	Vertical : 45° / 135° Horizontal : 90°
█	Amp	UK : 10A / 13A / 16A / 20A / 32A UK + IEC : 16A / 20A / 32A SCH : 16A / 20A / 32A SCH + IEC : 16A / 20A / 32A
█	Circuit Protection	CR = Hydraulic Magnetic Circuit Breaker (MCB) F = Resettable Fuse
█	Inlet	C14 : IEC320 C14 C20 : IEC320 C20 EN : IEC 60309 OE : Open end
█	Cordset	3 = 3M / 9.84' * Custom length on request
█ █	Bottom or top feed (only for vertical PDU)	B = Bottom feed T = Top feed
█ █	Colored PDU casing (only for vertical PDU)	1 = Black 2 = White 3 = Red 4 = Blue

Product Code Example

- V4UK135/16C13/4C19-16A-F_EN/3B-4**
1-Phase Basic series Vertical PDU with UK (135°) x 4 & IEC C13 x 16 & C19 x 4 / 16A / Resettable Fuse / 3M cordset + Inlet IEC60309 2P+E / Bottom Feed / Blue Casing
- V24SCH-30A-CR_OE/3B-2**
1-Phase Basic series Vertical PDU with Schuko outlet x 24 / 30A / Circuit Breaker / 3M cordset + Inlet Open End / Bottom Feed / White Casing
- H8UK90/6C13/4C19-32A-CR_EN/3B-1**
1-Phase Basic series 2U Horizontal PDU with UK (90°) x 8 & IEC C13 x 6 & C19 x 4 / 32A / Circuit Breaker / 3M cordset + Inlet IEC60309 2P+E / Black Casing

For more information, please visit www.austin-hughes.com

Value-Add Options :

> Colored Power Cords

- C13-C14 : Red / Blue / Light Grey / Orange
2M or 3M
- C19-C20 : Red / Blue
2M

> IEC Secure Sleeves

- Secure the power cord connections to the PDU IEC outlets
- Simple and cost efficient
- Sleeve attached to C14 power cord inlet :
[IPP-SS-C13](#) (pack of 200)
- Sleeve attached to C20 power cord inlet :
[IPP-SS-C19](#) (pack of 100)

> Surge protector

- Ground the unwanted voltages above a safe threshold.
- Reach us for configuration details :
inquiry@austin-hughes.com

> EMI filter

- Suppresses conducted interference on a signal or power line. Reach us for configuration details :
inquiry@austin-hughes.com

Distributed by:

PT. Uni Network Communications

Jl. Batu Jajar No. 11A, Sawah Besar
Jakarta Pusat - 10120
Telp.: 021 3512977
Email: sales@abba-rack.com | marketing@unc.co.id
www.abba-rack.com | www.unc.co.id | www.kvm.co.id

Distributor by country on application